

# REBBERG DIELSDORF HOUSE

## 玻璃屋，葡萄情

设计 / Martin Reusser, Boris Egli, Markus Müller, Frank Schäfer  
摄影 / Vito Stallone 编译 / 范嘉苑 美编 / 彭旭华

项目地址 瑞士  
项目面积 291m<sup>2</sup>  
设计单位 LSP Architekten ETH FH SIA AG

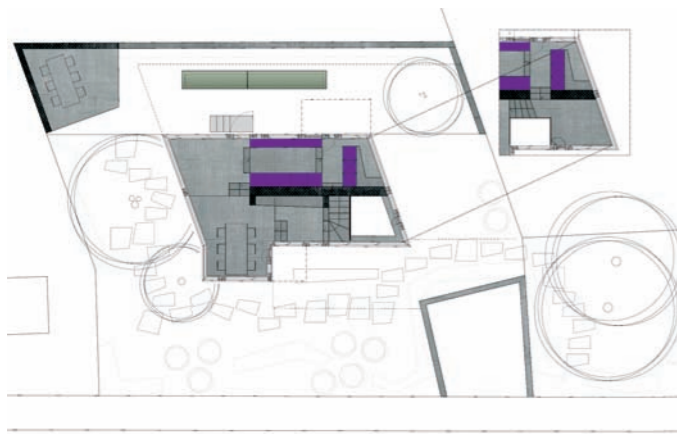




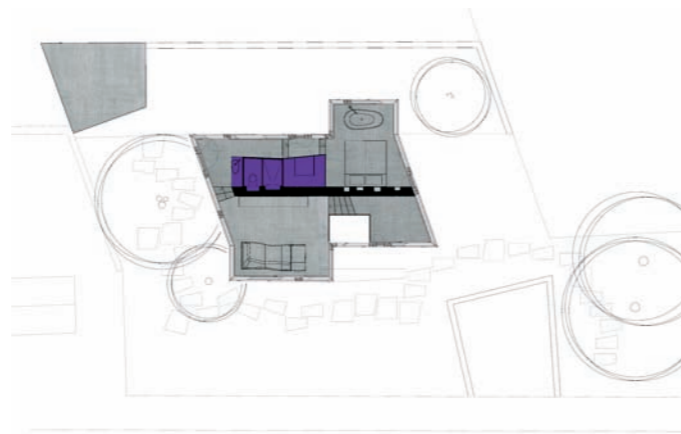
Martin Reusser & Markus Müller  
Frank Schäfer & Boris Egli  
瑞士L3P Architekten ETH FH SIA Ag  
创始人兼主设计师

本案位于苏黎世Dielsdorf地区的一个葡萄园里的陡峭小山坡上，经过移除以后，房子的首层边界只有5×9米，而地面上的最大居住面积仅能达到83平米，要在这块土地上建造房子无疑是个巨大的挑战。如果采用传统的实体墙立面、楼梯通道和停车场的建造方式会远超过可用的土地面积，所以设计师以玻璃、混凝土和钢铁作为主要材料，并合理地规划房屋结构以节省空间。

经过考量后，设计师决定仿造葡萄树的结构逻辑来建造这座位于葡萄园斜坡上的房子：中央的承重墙、各层平台以及玻璃窗分别遵循了葡萄树中的茎、枝干以及悬挂的葡萄的结构。通过5.44米高的车库入口能通往建筑内部的地下室和招待室。这里的房间被划分成不同的高度，光线透过天窗照进屋内，让室内空间获得了充足的自然光。通往首层的楼梯侧边有内置于混凝土墙面的书架，沿着这条楼梯往上走，便能到达首层客厅。紫红色的吊床和橱柜仿佛映射出了葡萄的色彩，给暗色调的混凝土空间瞬间增添



一层平面图



二层平面图



了一抹亮丽。顶层的家具也以紫色为主，与首层的主色调相呼应，也让整座房屋具有了鲜明的特色。

室内的灯光设计也花了不少心思，房子内安装了多处的嵌入式LED光管，以照亮室内空间的主要框架，突出空间结构的美感。窗户框架上安装的条状光管也成为了夜晚降临后室内空间的主要光源。除此以外，各种灯具都极具个性和时尚色彩，是整座房子的亮点之一。

这个项目是建筑设计师与建筑工程师之间的一个跨学科合作，房子的整体结构极富创新性。富有雕塑感的钢筋混凝土与裸露的黑色钢铁构架无处不在，墙面、天花板、地板甚至是书架都是整体框架的一部分。裸露的混凝土设计让住宅回归到了最简化的基本结构，而各式各样的手工制家具以及清透的玻璃立面则为这座房子增添了一份脱俗而不失温馨的气质。

After the removal of border limit clearances only 5 m × 9 m are left over in this small steep lot at the vineyard at Dielsdorf. With a maximum of 83 square meters above-ground level living, this lot has long been considered





剖面图



unbuildable. A classical residential house with solid outer walls, conventional access staircase and traffic area has no space on this site.

This work on the vineyard slope copies the logic of a vine: a supporting middle wall, platforms and non-bearing windows follow the structure of the stem, the trunk and the hanging fruit. The subterranean access to the building is through the carport. One enters the building through an up to 5.44 m high entry. A cellar and house services room are attached to the entry. These rooms are provided with light through both a space



divided into different heights and a skylight. Ascending the stairs one comes to the concrete bookcase, which acts as a horizontal bracing for the framework.

The dominant structure of the framework is illuminated by LED light lines built into the building's casing. The light lines sitting in the window frames throw a diffuse basic light into the inner core.

Room and structure are one, resulting from an interdisciplinary collaboration between the architects and building engineer. The sculptured reinforced concrete and steel framework in black-colored exposed concrete is omnipresent: walls, ceilings, floors and even the bookcase are a part of the framework. The residence is reduced to the elementaries on naked exposed concrete, complemented through diverse handmade furniture and enveloped in a glass mantle. **M**